



# LED SPORTS LIGHT J SERIES

400W/500W/600W/720W/800W/900W/1000W

CE CB SAA ErP





## ►►► DESCRIPTION

J series produces ideal light distribution with the highest reliability level - incredibly high over 93% total efficiency, while saving up to 80% energy compared with traditional lighting. With die-cast aluminum(AL1070) housing, rugged and weather-tight design, this durable luminaire can withstand the most demanding elements, ideal for use in high vibration areas and extreme outdoor conditions. Its aesthetically pleasant design makes it a wonderful lighting scene in the environment.

SP-J2xxW UXYZ ▼

SP-J1xxW UXYZ ▼

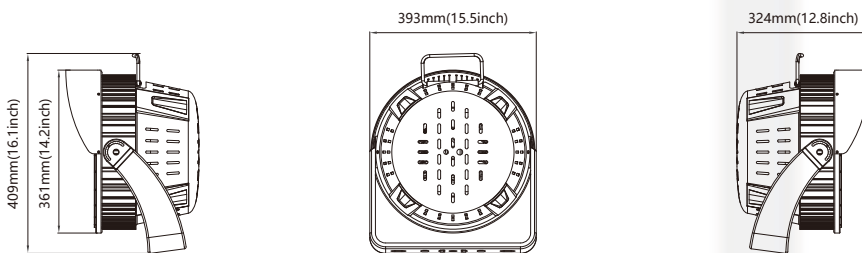


## ►►► ORDERING INFORMATION

SP	J	xxxW	U	X	Y	Z	CC
Sports Light	J Series J=J1/J2	Wattage 400-1000W	CCT 27=2700K 65=6500K	X=N non-dimmable X=D dimmable	Beam Angel Y=15, 15° Y=30, 30° Y=45, 45° Y=60, 60°	Z=N Without Sensor Z=G With Sensor Z=P Photocell Sensor	CC=Input Voltage Range (100-277V Or 277-480V)

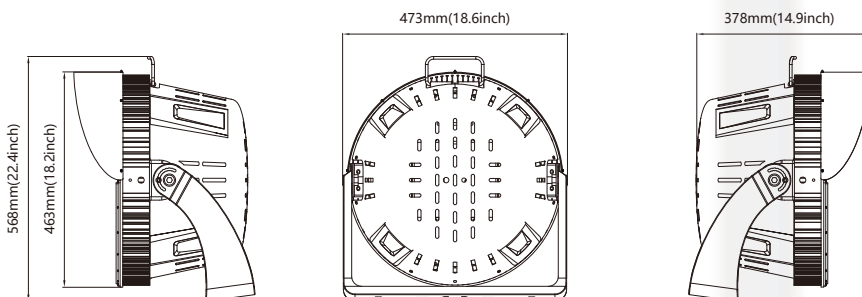
# ►►► SPECIFICATION

Model NO.	SP-J1xxW UXYZ			SP-J2xxW UXYZ			
Wattage	400W	500W	600W	720W	800W	900W	1000W
Efficiency	160lm/W	150lm/W	140lm/W	165lm/W	160lm/W	155lm/W	150lm/W
Power Supply	Inventronics/Meanwell/Sosen			Inventronics/Meanwell/Sosen			
Input Voltage	AC100-277V/277-480V			AC100-277V/277-480V			
Power Factor	0.95			0.95			
Total Harmonic	<15%			<15%			
LED Chip	3737(15°)/5050			3737(15°)/5050			
CCT	2700-6500K/RGB/RGBW			2700-6500K/RGB/RGBW			
Intelligent Control	DMX512/DALI/NFC wireless control			DMX512/DALI/NFC wireless control			
CRI	Ra70/Ra80/Ra90(Optional)			Ra70/Ra80/Ra90(Optional)			
Beam Angle	15°/30°/45°/60°			15°/30°/45°/60°			
EPA	0.95Ft²			1.40Ft²			
Lifespan	50,000 Hours			50,000 Hours			
Ingress Protection	IP66			IP66			
Housing	Cold Forging Aluminum(AL1070)			Cold Forging Aluminum(AL1070)			
IK	IK09			IK09			
Working Temperature	-40°C(-40°F) - +50°C(122°F)			-40°C(-40°F) - +50°C(122°F)			
Surge Protection	10/20kV Optional			10/20kV Optional			
Lens Material	Anti-UV PC Optical Material			Anti-UV PC Optical Material			
Net Weight	10kg/22.04lbs			15kg/33.06lbs			
Gross Weight	14kg/30.86lbs			20kg/44.09lbs			
Packing Size	557x433x367mm(21.9x17.1x14.5inch)			646x546x380mm(25.4x21.5x15.0inch)			



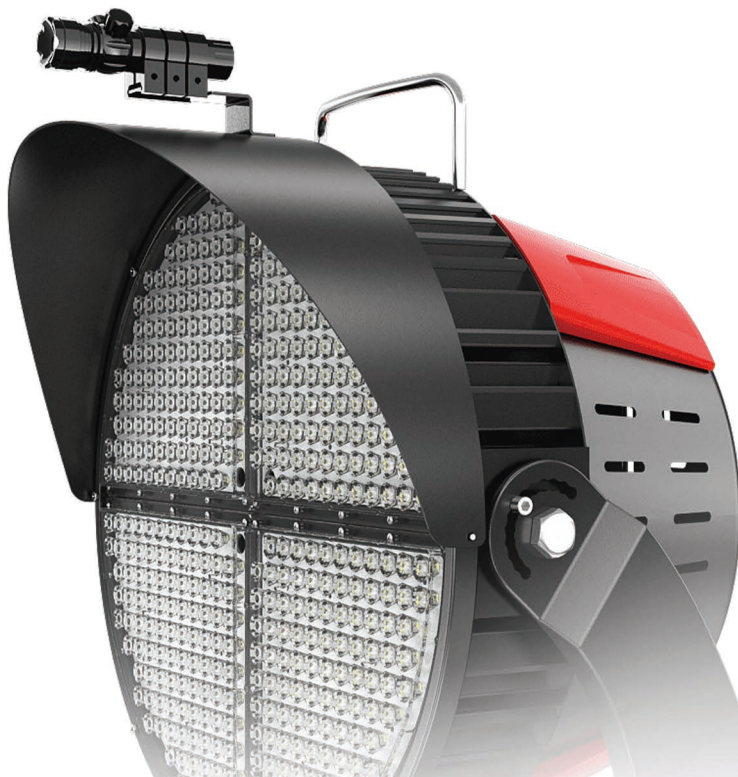
▲ SP-J1xxW UXYZ

▼ SP-J2xxW UXYZ



## ►►► FEATURES

The handle is optional



Easy Installation.



Energy saving up to 80% compared to traditional stadium light.



Cold forging aluminum housing with anti-corrosion polyester powder coated finish.



Excellent heat dissipation.



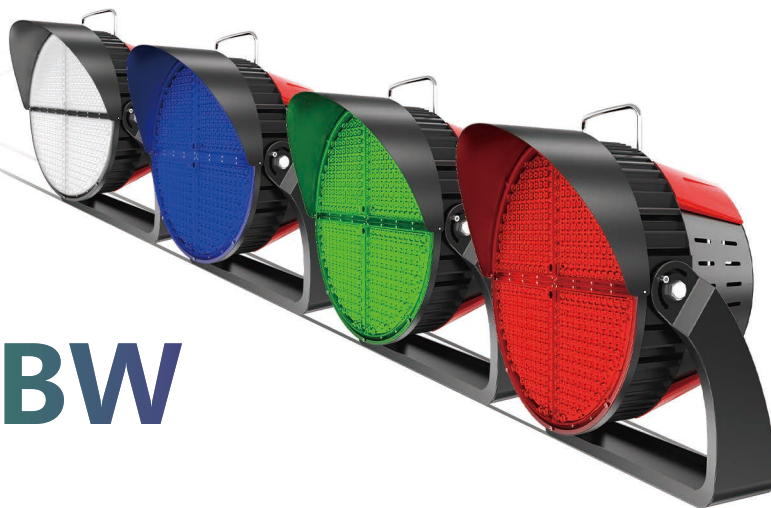
Long lifespan of 50,000 hours.



Special circuit design for each part to work separately.



Adjustable Output Current (AOC) with NFC

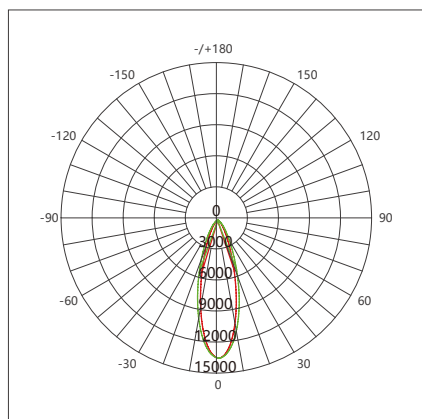


# RGB/RGBW

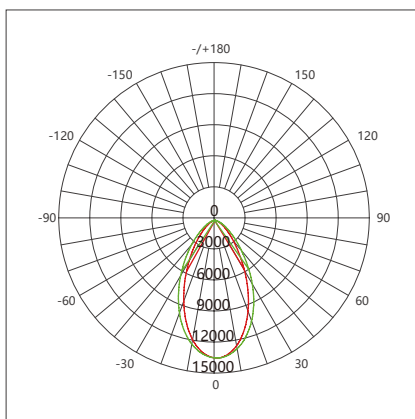


# ►►► PHOTOMETRIC DIAGRAMS

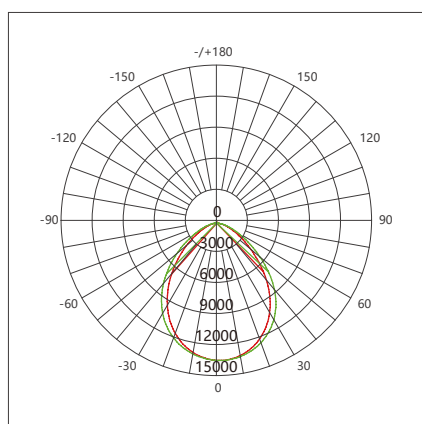
Optional(15°/30°/45°/60)



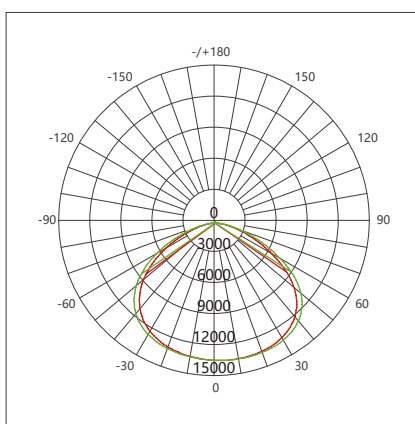
cd/klm



cd/klm

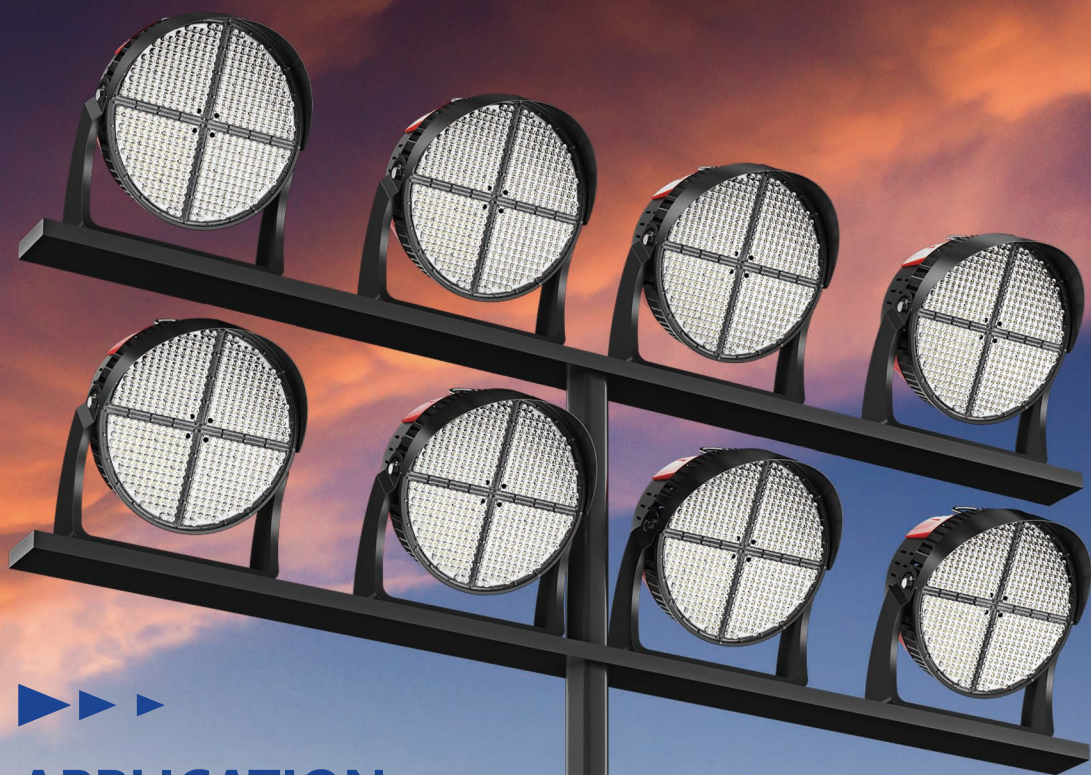


cd/klm



cd/klm





## APPLICATION AREAS

- Sporting facility
- Stadium
- Container loading area
- Shipping yard
- Flood and area lighting
- High mast roadway
- Airport
- Industrial lighting
- Parking lot
- Railway
- Port
- Public square





<END>

